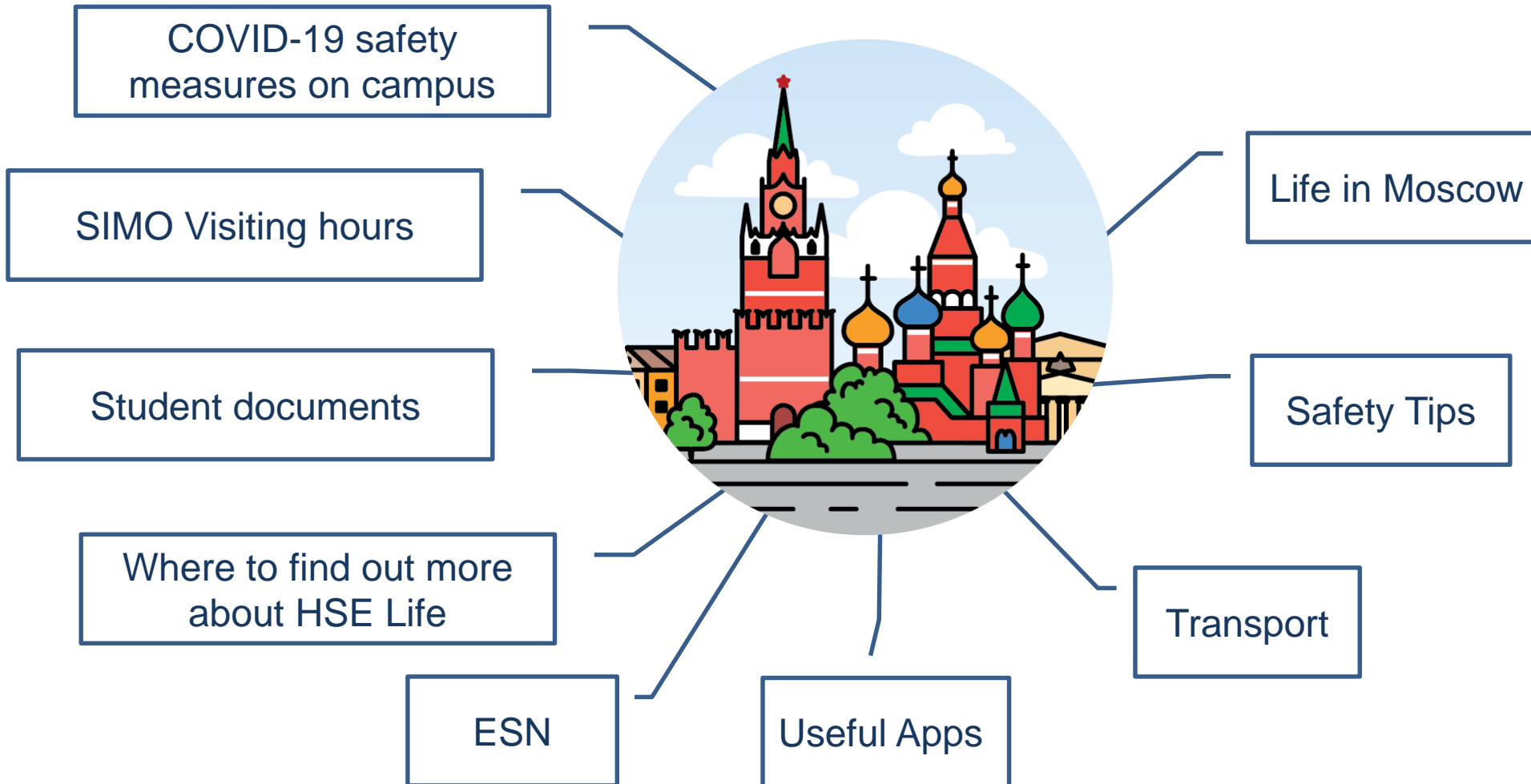


An aerial photograph of Moscow, Russia, showing a dense urban landscape. In the foreground, there are several large, ornate, light-colored buildings with many windows. In the middle ground, a river flows through the city, with a bridge crossing it. In the background, a variety of skyscrapers are visible, including a prominent blue, curved building and several tall, rectangular towers. The sky is clear and blue.

HSE UNI & MOSCOW BASIC INFO KIT

AGENDA



COVID-19 MEASURES ON CAMPUS

NEWS

- ✓ Students can take face-to-face classes without vaccination confirmation certificates.
- ✓ Students can move into dormitories and rented accommodation without vaccination confirmation certificates.



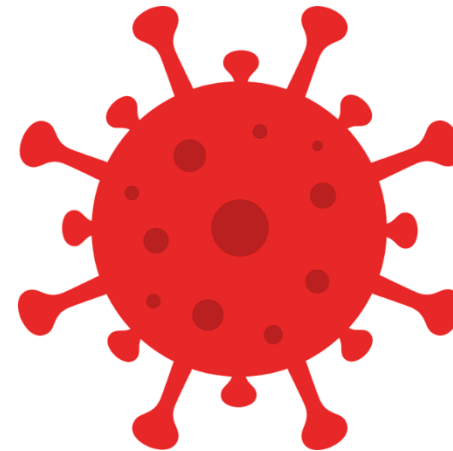
[News](#) [Officially](#)

HSE University Classes to Be Held On Site for All Students

Classes in the new academic year will take place on site for students of all HSE University campuses. Existing COVID safety precautions will remain in effect.

COVID-19 MEASURES ON CAMPUS

- **Report your COVID-19 status in MyHSE Services Account (lk.hse.ru)**
- **Masks**
- **Social distancing**
- **Limit of 50 students per classroom**
- **1/4 of courses is held in a remote synchronous format**



FEELING SICK?



DORM

1. Inform your dorm staff
2. [Email](#) SIMO



APARTMENT

1. Phone 122 or the ambulance 103
2. [Email](#) SIMO



APPOINTMENTS WITH SIMO TEAM:



10-min face-to-face visit to the SIMO office

Aim: pick up or drop off documents

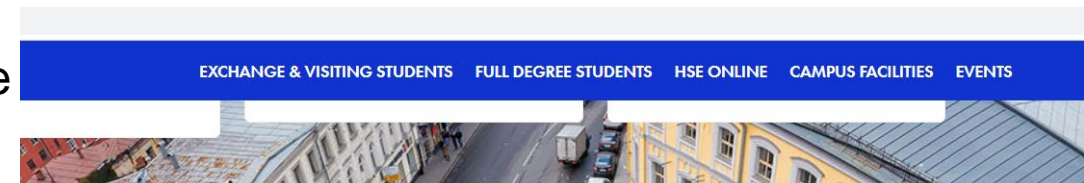


20-min Zoom meeting with SIMO

Aim: ask questions to SIMO



Book on www.istudents.hse.ru/en



Contacts

Student International Mobility Office (SIMO)

We are part of the Department of Internationalisation



Address

Moscow, [11 Pokrovskiy Bulvar](#),
office D605



Visiting hours (by prior
appointment):

Mon.— Wed., 10:00 — 13:00
Thu.— Fr. 14:00 — 17:00



Email

international.study@hse.ru



[Facebook](#)



[Instagram](#)



[Book an appointment](#)



Tatiana Gremiakina

Incoming mobility coordinator

phone: +7 (495) 772-9590*27806



Valeriya Sokolova

Deputy Director of
SIMO/Coordinator of 'Semester
in Moscow' programme

phone: +7 (495) 772-9590*27668



STUDENT DOCUMENTS

SIMO-Student International Mobility Office
Orientation Session for Fall 2021 Exchange and Visiting Students

In your home
country

Passport + Visa

**Health
Insurance**

Valid for the whole study
period

**Health
certificate**

1st PCR test

Day of arrival

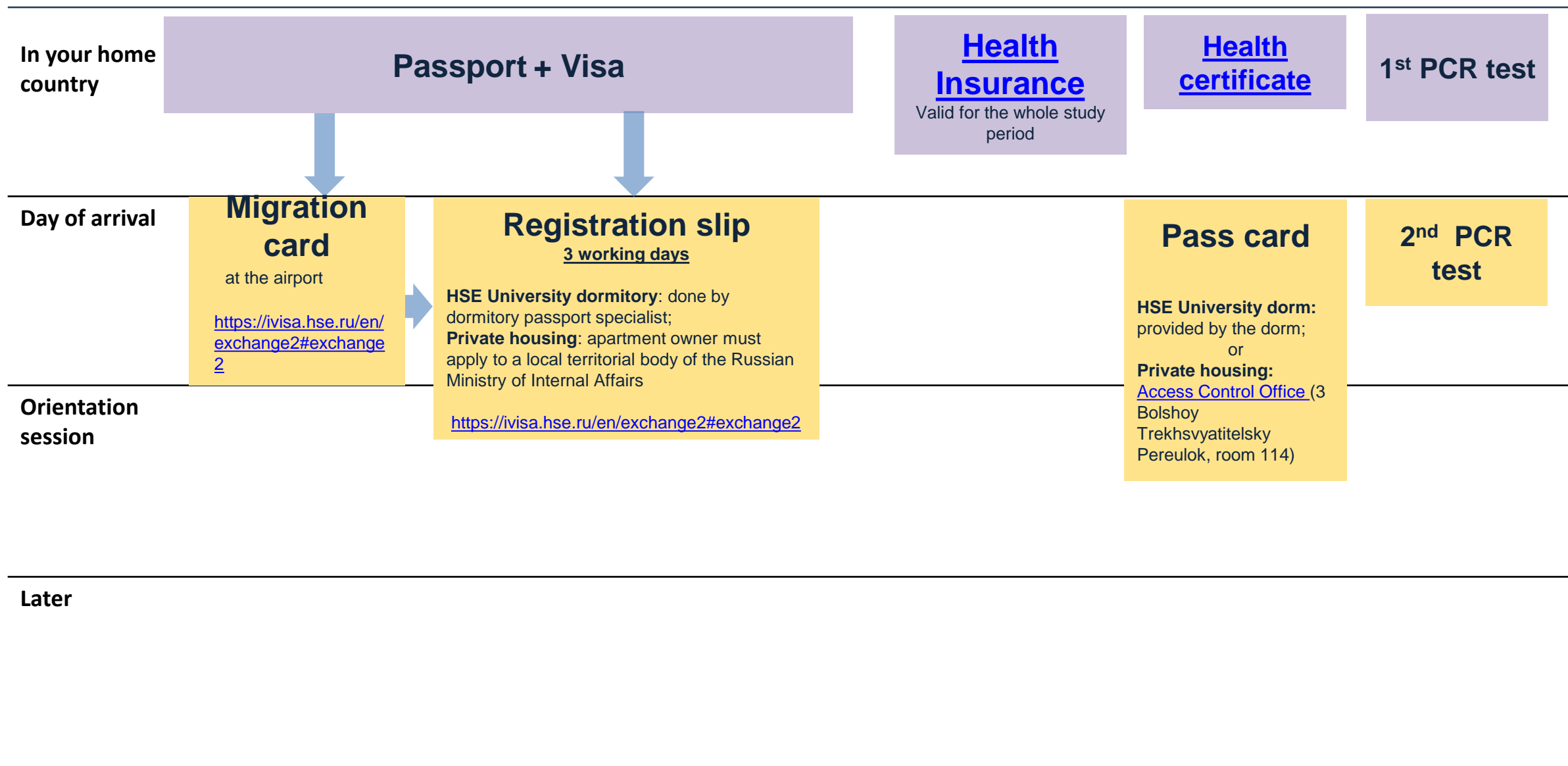
Orientation
session

Later



STUDENT DOCUMENTS

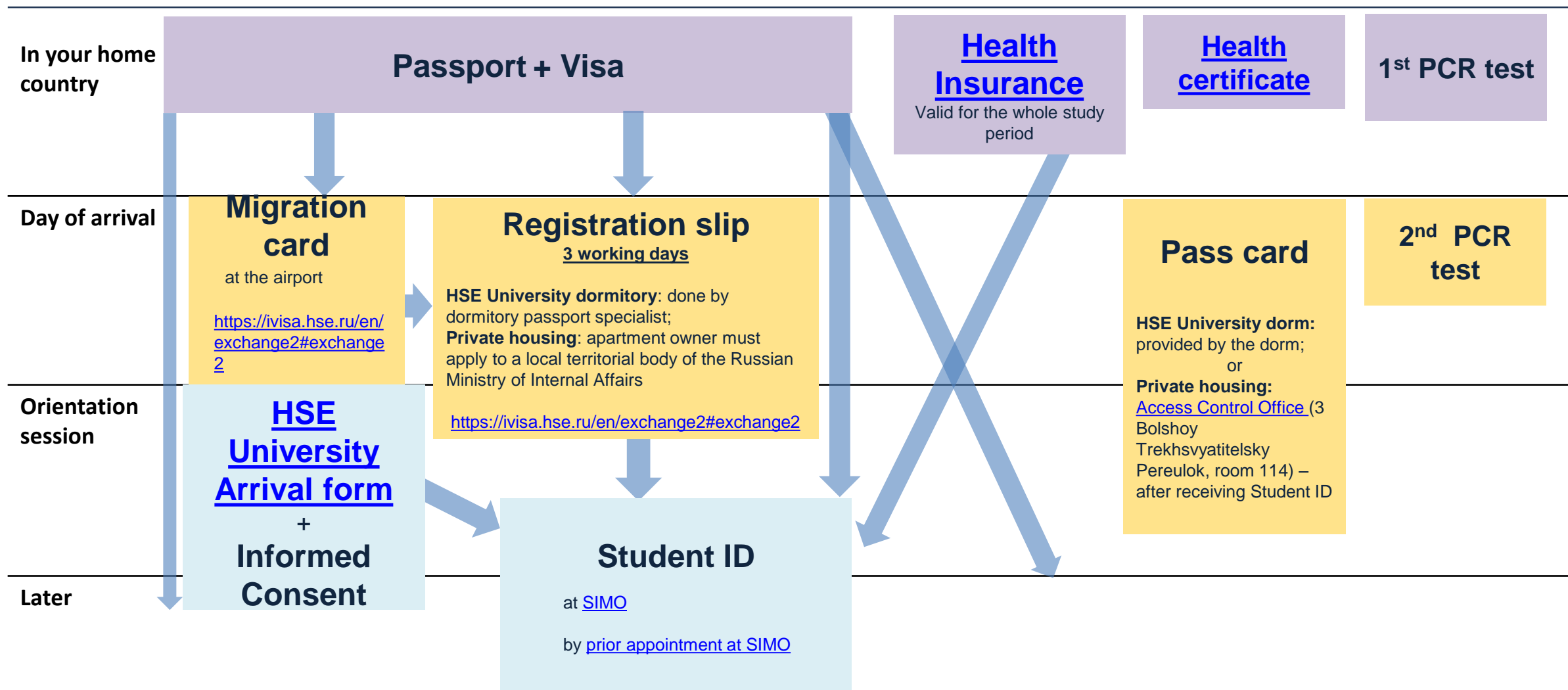
SIMO-Student International Mobility Office
Orientation Session for Fall 2021 Exchange and Visiting Students





STUDENT DOCUMENTS

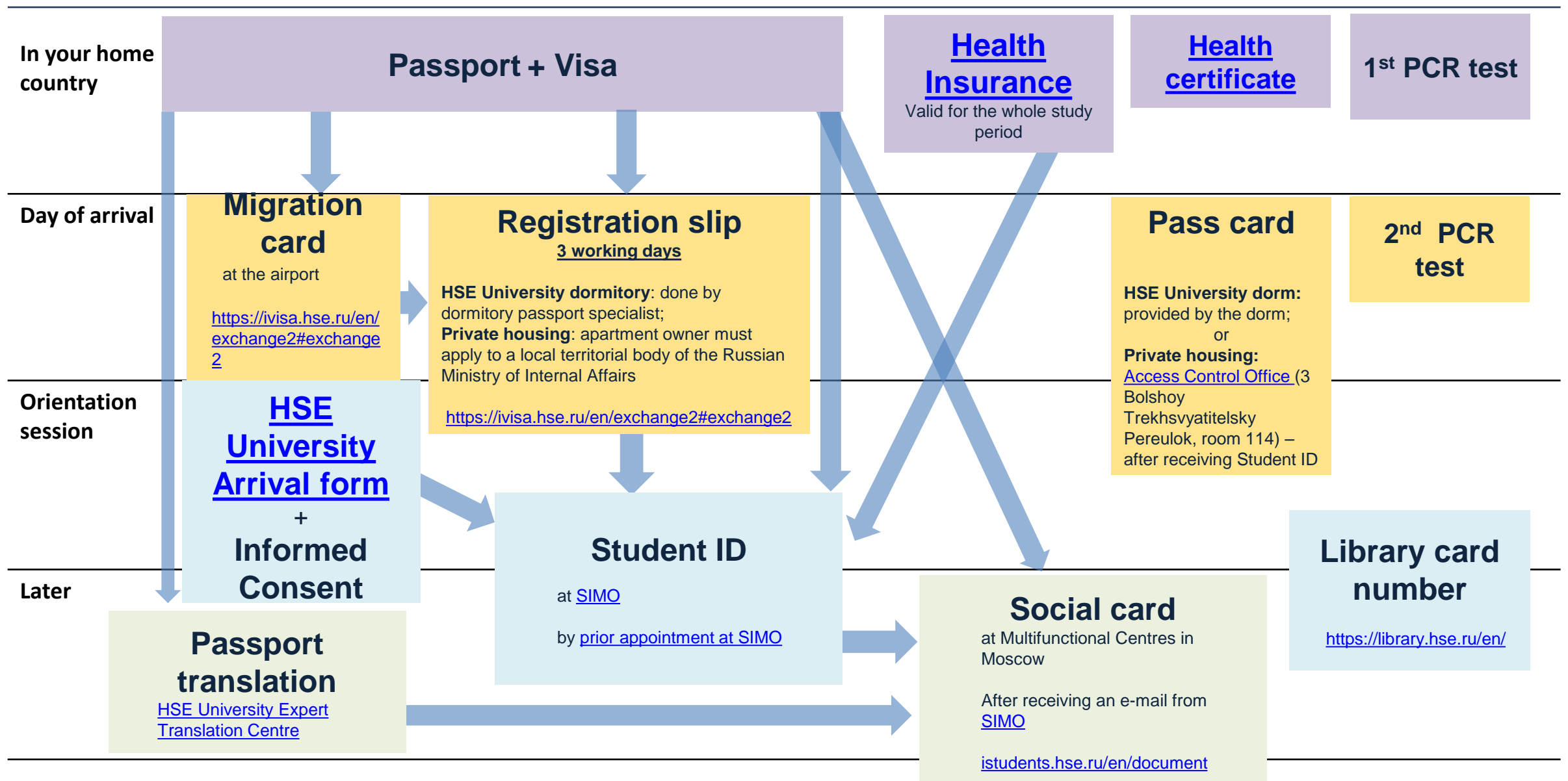
SIMO-Student International Mobility Office
Orientation Session for Fall 2021 Exchange and Visiting Students





STUDENT DOCUMENTS

SIMO-Student International Mobility Office
Orientation Session for Fall 2021 Exchange and Visiting Students





INFO ABOUT HSE UNIVERSITY CAMPUS LIFE

- HSE University Life <https://www.hse.ru/en/our/> (ENG, RUS)
- Facebook: [HSE International Students](#) (ENG)
- Campus Life: <https://istudents.hse.ru/en/campus> (ENG, RUS)
- [The Moscow Times](#) (ENG)

- HSE Speaking Clubs:

[German Speaking Club](#)

[Italian Club](#)

[French Club](#)

[Japanese Speaking Club](#)

[Poboltaem? English Speaking Club](#)



HSE ERASMUS STUDENT NETWORK



Buddies



Fun events and trips



ESN Football Team



Charity events

Facebook group:

<https://www.facebook.com/esnhsemsk>



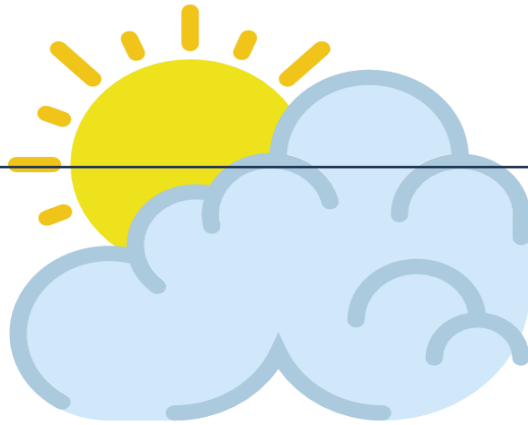
SIMO INSTAGRAM

Tell others about
your study abroad experience
on IG @hse_aroundtheworld





LIFE IN MOSCOW



Winter **clothes** and **footwear**
[Decathlon](#)
[Sportsmaster](#)



Visit [Life in Moscow](#)

Kitchen utensils
[Perekrestok](#)
[Auchan](#)
[IKEA](#)

[List of grocery stores](#)



- Check **terms of using your card abroad**
- All ATMs have a menu to select a language
- [List of reliable banks](#)



ESN HSE Moscow

Language barrier?
[Buddies](#) are there to help!
+
[Google Translate App](#)



SAFETY TIPS

SIMO-Student International Mobility Office
Orientation Session for Fall 2021 Exchange and Visiting Students



Respect **laws**
Apply
common
sense



Finalize all **visa**
and **registration**
procedures **ON**
TIME!



Always **carry with**
you:

- registration,
migration card,
passport
- your student ID



Carry documents
in a **separate**
pocket

Make **photocopies**
of all your
documents and
keep them at home



Check with **your**
insurance company
where (list of
hospitals) and **how**
you can use your
insurance (payment /
reimbursement)



Use only official
registered **taxi**
services



Be moderate
with unfamiliar
food and
drinks



Do not drink
tap water



HSE University
[Centre for](#)
[Psychological](#)
[Counselling](#)



Save **emergency numbers** on you mobile
phone:

- Universal emergency line – 112
- Dormitory
- Insurance company
- Embassy
- SIMO (Mon-Fri, 9.30-18.30):
- +7-495-772-9590*27806; +7-495-772-9590*27668

• **HSE Emergency Line (24/7):**
+7(985) 040-13-55



MOSCOW TRANSPORT: METRO

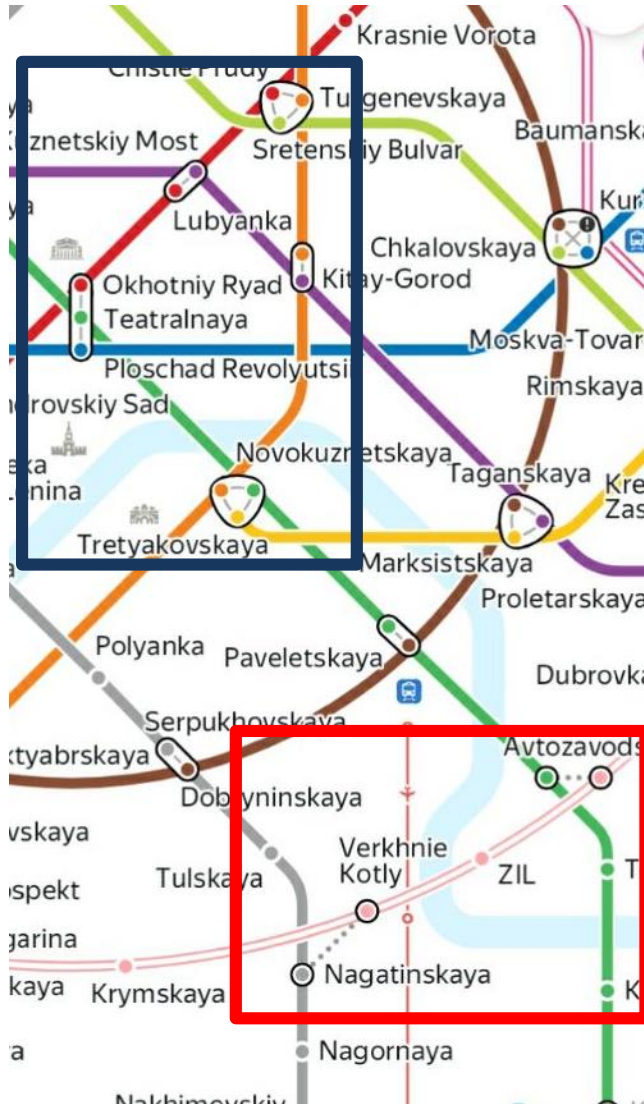
SIMO-Student International Mobility Office
Orientation Session for Fall 2021 Exchange and Visiting Students





MOSCOW TRANSPORT: METRO

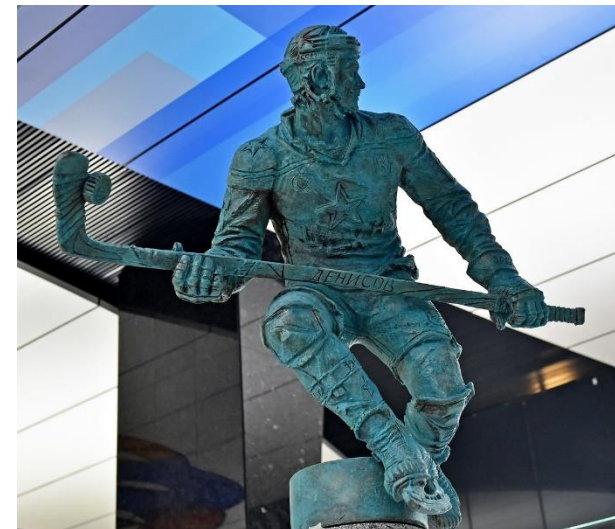
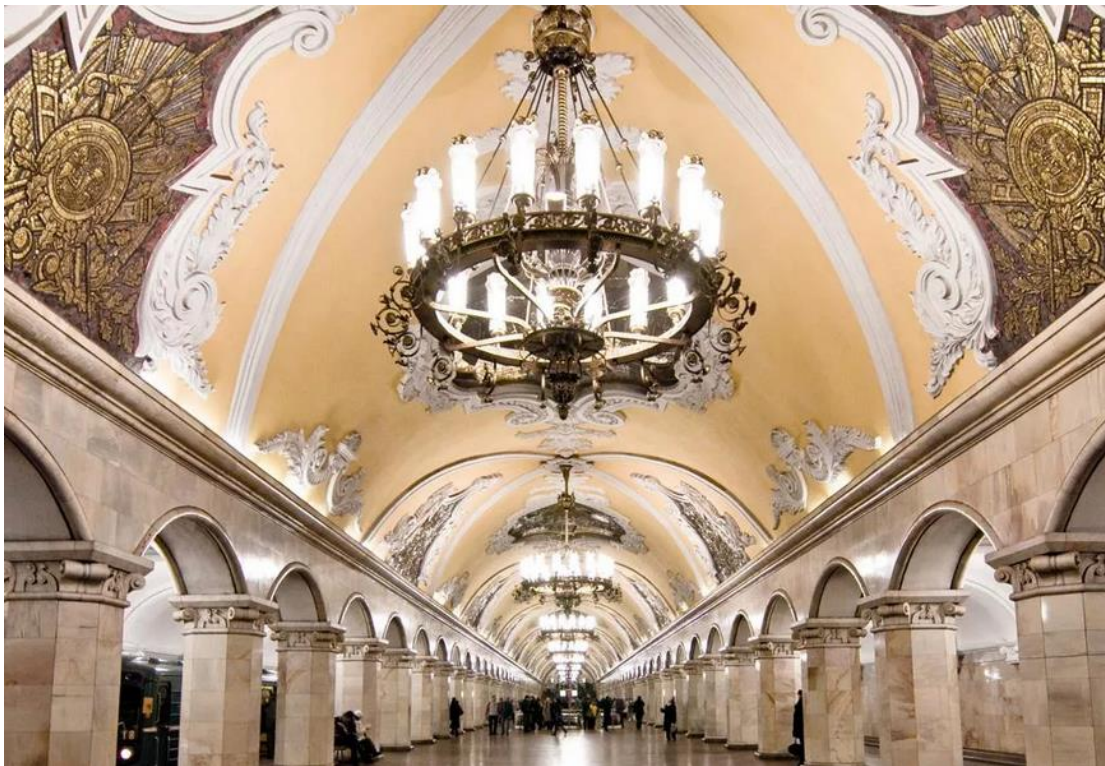
SIMO-Student International Mobility Office
Orientation Session for Fall 2021 Exchange and Visiting Students



- ❖ **Stations connected with a line: direct underground line change**
- ❖ **Stations connected with a dotted line: you need to walk on the street to change lines**
- ❖ **Lines D1 & D2: run by a schedule, suburban trains**



MOSCOW TRANSPORT: METRO





MOSCOW TRANSPORT

SIMO-Student International Mobility Office
Orientation Session for Fall 2021 Exchange and Visiting Students

Ground Public Transport: operates from 6.00 a.m. until 1 a.m + night buses (1 am – 5.30 am)

Stops are marked by a sign with:

'A' for bus

'Т' for trolley;

'Тр' for tram

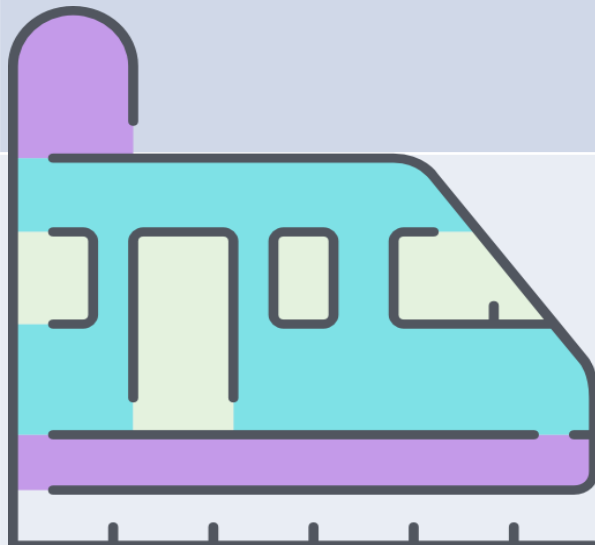


Tap your ticket on **validation machine** sensor

Use apps for Moscow transport



Metro: operates from 6.00 a.m. until 1 a.m

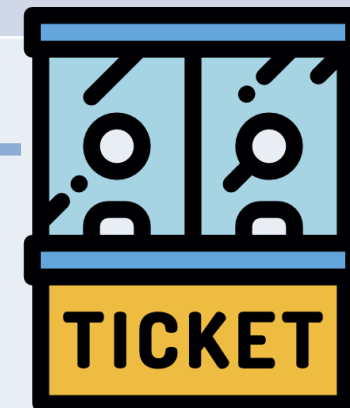


Ticket for

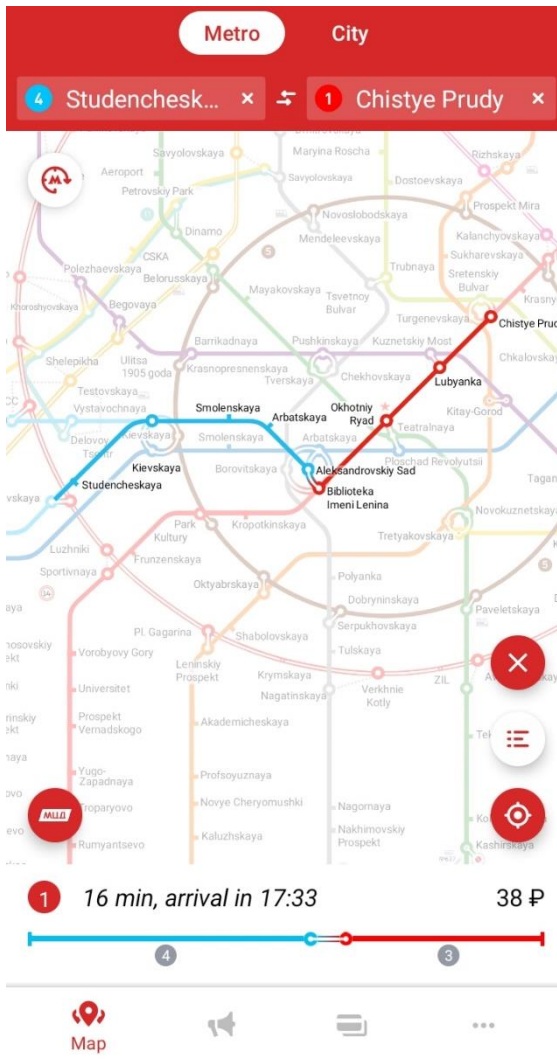
- 60 trips: 2 070 r
- 1 month (unlimited rides): 2 245 r



TROIKA card: 50 r



USEFUL APPS



PUBLIC TRANSPORT

- Ground transport and metro:
[Yandex.Maps](https://yandex.ru/maps/)
- Metro:
[Mosmetro](https://mosmetro.ru/) or [Yandex.Metro](https://yandex.ru/metro/)

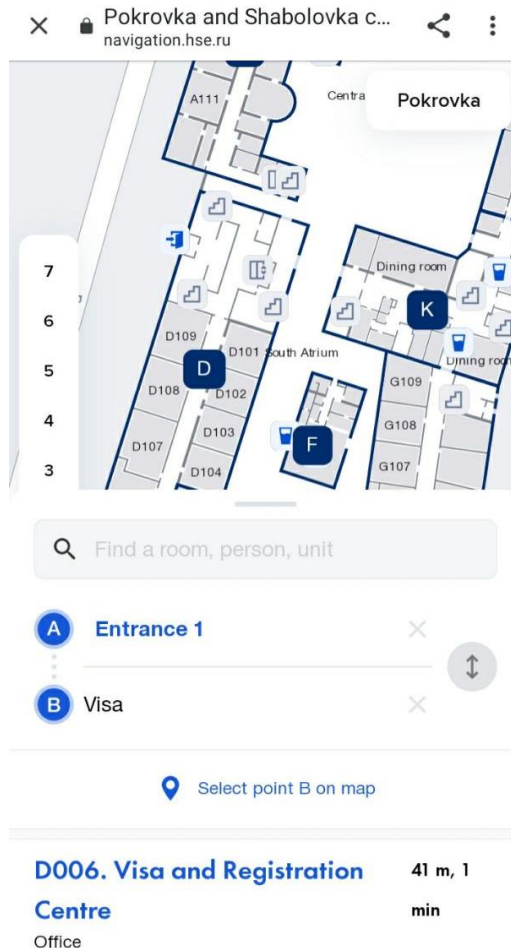
TAXI

- [Yandex.Taxi](https://yandex.ru/taxi/)
- [Uber Russia](https://uber.com/russia/)
- [Gett](https://gett.ru/)

LANGUAGE

- [Google Translate](https://translate.google.com/)

USEFUL APPS: HSE X APP



Interactive Maps:

- 11 Pokrovsky Boulevard
- Shabolovka

Schedule

People search

More features are coming

USEFUL INFORMATION:

- [Student International Mobility Office](#)
- [HSE University International Student Handbook](#)
- [Buddies](#)
- [HSE University Library](#)
- [Map of HSE University buildings](#)
- [Maps.Me \(offline maps\)](#)
- [Transport in Moscow](#)
- [Mobile phones](#)
- [Life in Moscow](#)