

Life in Moscow

Orientation Session 2021



Discover Moscow



Moscow Guidebook

<https://moscowseasons.com/en/guide/>

There's tons to do in Moscow all year round



Visit Moscow Theaters

<https://weheart.moscow/theatres/>

Moscow has always been and still remains the city of theatres



Free Walking Tours

<https://www.freetour.com/moscow>

Free walking tours in Moscow.



Moscow Metro

Operation hours:
6 a.m. – 1 a.m.



[Yandex.Metro](#)

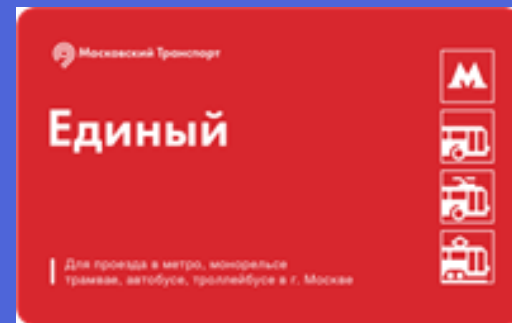


Troyka Card



RUB 42
+RUB 50

Ediniy Card



RUB 60

Social Card



RUB. 415
per month

+Bank Card



Ground Public Transport (bus, trolley, tram)

Operation hours:
5 a.m. – 1 a.m.



[Yandex.Maps](https://yandex.ru/maps)



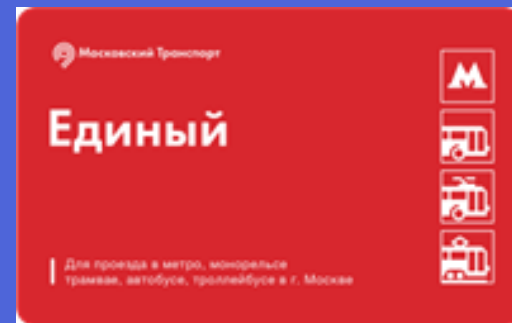
Place your ticket on
the validation machine's sensor

Troyka Card



RUB 42
+RUB 50

Ediniy Card



RUB 60

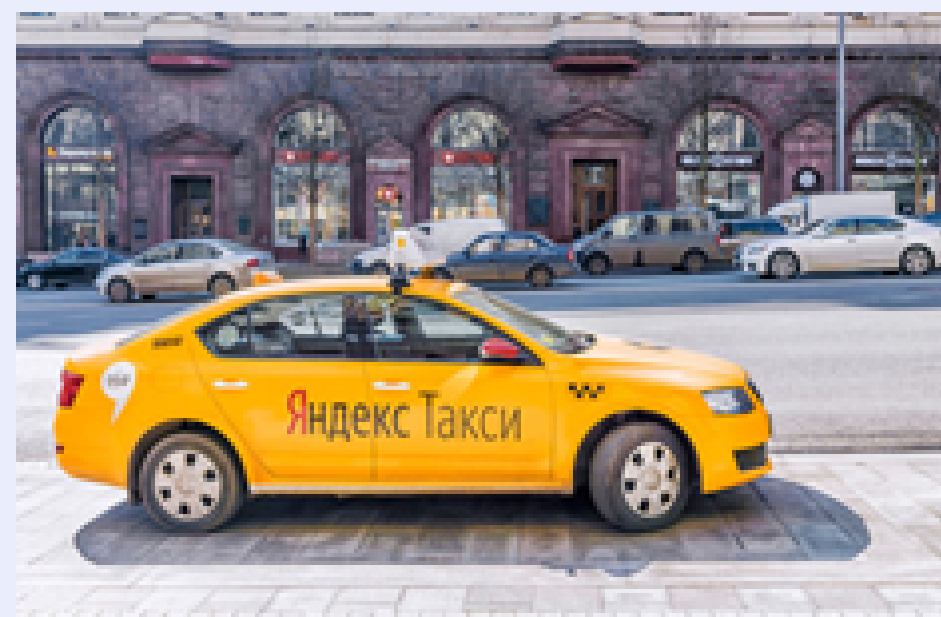
Social Card



RUB. 415
per month

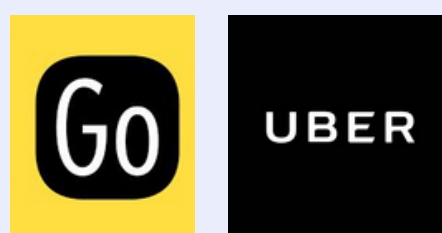
+Bank Card





Taxi

Please use only official taxi



Yandex Go, Uber



Bike Rental

Register in the application and link a bank card
Find a bike station, select a bike, enter your username and PIN and start renting.



Velobike



Scooter Rental

Register in the application and link a bank card
Find the scooter on the map through the app and start renting by scanning the QR code and unlocking the scooter.



Moscow Transport



USEFUL LINKS



Yandex Trains

Current train schedule



Aeroexpress

Schedule for express trains to
Sheremetyevo, Vnukovo,
Domodedovo airports



Google Translate

How to communicate with Russians
easily even if they don't speak
English

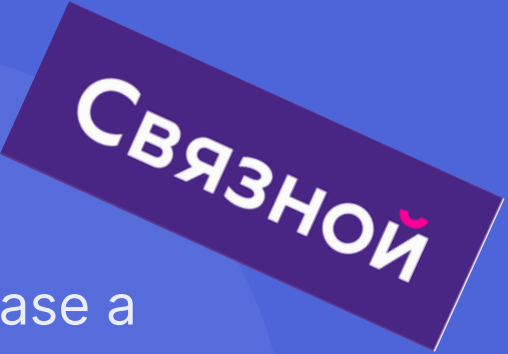
Mobile Communication



In order to buy a SIM card, you will need to present your passport

Approximate communication cost per month = RUB.500

You may purchase a SIM card in brand stores of major telecom providers or any mobile phone store



Currency Exchange



Not all stores or businesses may accept foreign cards



In every HSE building, you will find an ATM where you can withdraw cash



We advise using currency exchange points at popular Russian banks



Grocery Stores and Food Delivery

Auchan (Ашан)

Pyatyorochka (Пятёрочка)

Billa (Билла)

Diksi (Дикси)

Magnit (Магнит)

Perекrestok (Перекресток)

VkusVill (ВкусВилл)

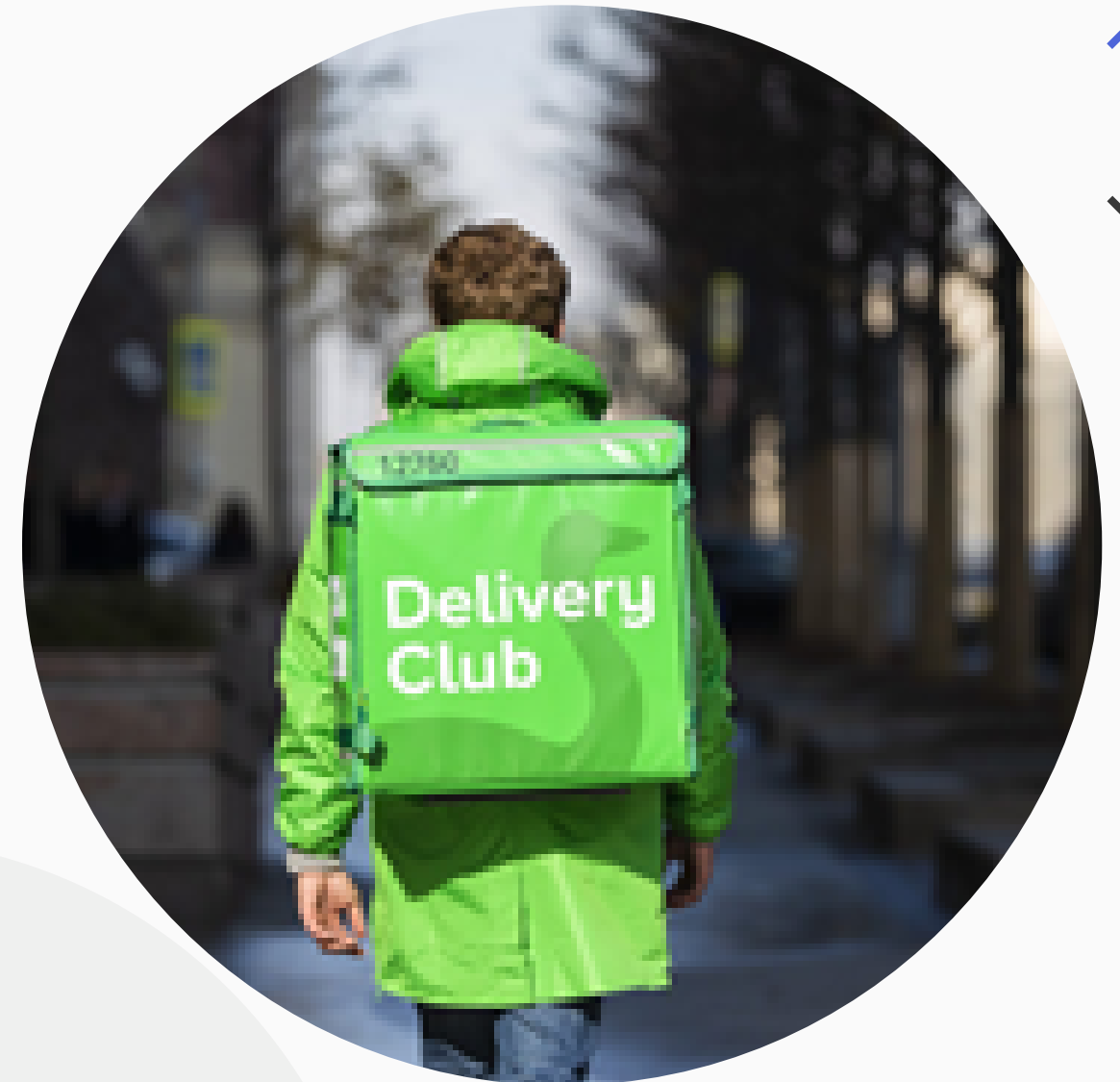
Azbuka Vkusa (Азбука Вкуса)

Delivery Club

Yandex.Eda

Samokat (Самокат)

Yandex.Lavka (Яндекс.Лавка)



Approximate product cost:

Bread RUB. 60

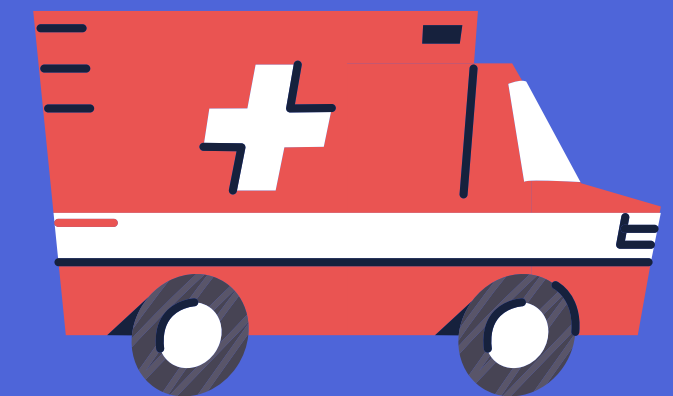
Milk (1 liter) RUB. 70

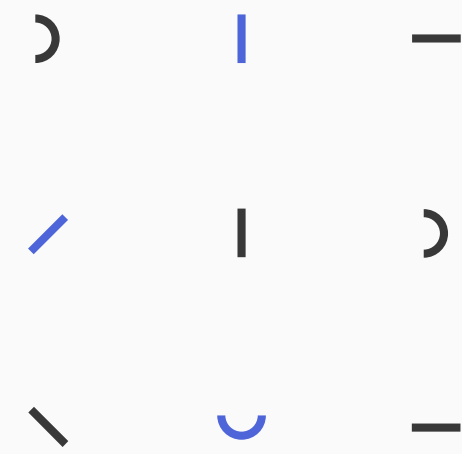
10 Eggs RUB. 90



IN CASE OF EMERGENCY OR SAFETY RISKS

Call the General Emergency Line
112





Life in Moscow

HSE Buildings

- About HSE Buildings
- Cafe & Restaurants around HSE
- Mini-guide to HSE
- Neighbourhoods
- Myasnitskaya - Guided Tour

Infrastructure

- Transport in Moscow
- Banks, Pharmacies and Supermarkets
- International Schools and Kindergartens
- Mobile Phones

Map of HSE Buildings in Moscow

International Admissions

International Students Support

International Faculty Support

University Life

Leisure

- Places of Interest
- Sports
- Religion

Useful Tips

- Cost of Living
- Safety Tips
- Useful Links

www.hse.ru/recommends/

