

# Medical Issues

Orientation Session 2021

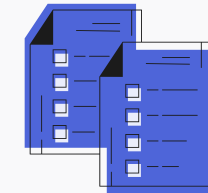


## Medical Issues

# Content



Medical Insurance



Medical Certificates



PCR-tests

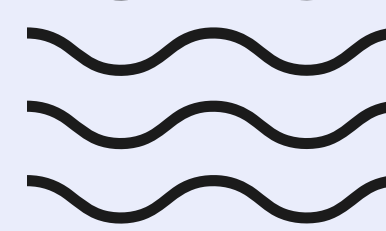


Vaccination against COVID-19



Emergency contacts

# Medical Insurance (VHI policy)



## When is it necessary to issue

Before arriving in Russia

## Which program should I choose?

Program should include physical examination, test for HIV, hepatitis B and a test for COVID-19 by PCR



**All foreign citizens in Russia should have medical insurance to cover their entire stay in Russia**

## Where to issue?

Please find insurance companies list recommended by HSE University:



**Please inform the manager of your degree program and send a scan of the medical insurance policy before the academic year starts**



# Medical Certificates

## BEFORE ARRIVAL:

- 1** **NEGATIVE TEST RESULT FOR COVID-19 (BY PCR)**  
Present at the checkpoint when crossing the border.  
The first COVID-19 test must be done no earlier than 3 calendar days before arriving in Russia.
- 2** **CERTIFICATE WITH A LIST OF VACCINATIONS**  
Must be issued by a medical institution in a free format with information about the inoculation had, as well as dates and types of vaccination.
- 3** **VACCINATION AGAINST COVID-19 CERTIFICATE (IF AVAILABLE)**  
Or medical exemption.  
Should be translated into Russian or English.

## AFTER ARRIVAL:

- 4** **NEGATIVE TEST RESULT FOR COVID-19 (BY PCR)**  
Present when checking into a dormitory/alternative housing option.  
The second COVID-19 test must be done within 3 calendar days after arriving in Russia.
- 5** **MEDICAL EXAMINATION**  
Within 10 days after arrival you should have a medical examination and testing for HIV, Hepatitis B.

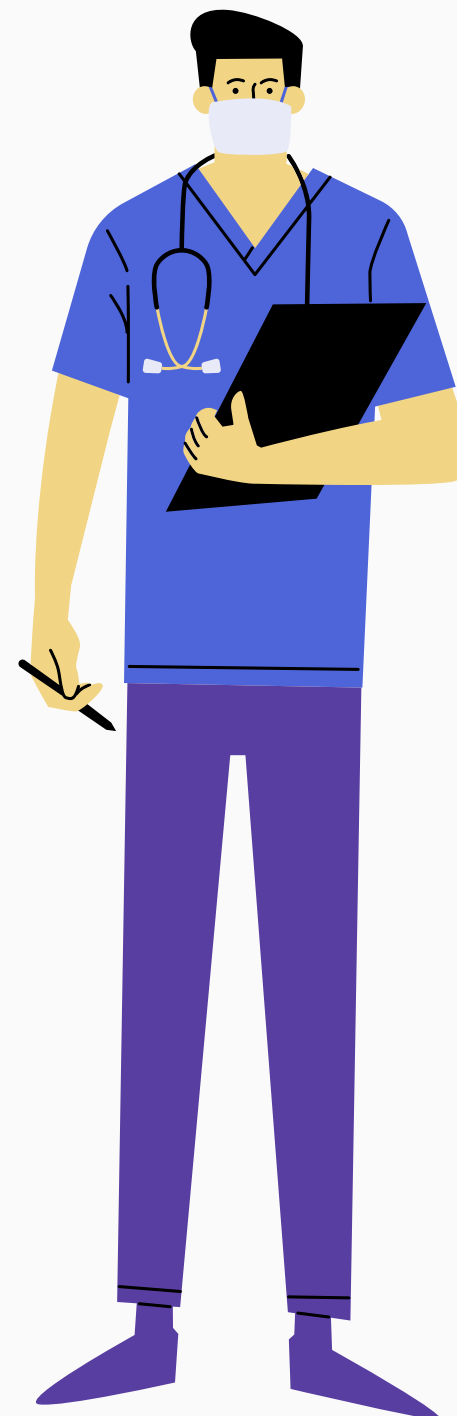
# PCR-test

## FIRST TEST

no earlier than three  
calendar days prior to  
your arrival

## SECOND TEST

within 72 hours after  
entry into  
the country



## PCR express-test centers:

Sheremetyevo (SVO),  
Domodedovo (DME),  
Vnukovo (VKO), airports.

## What to do if the result is positive?

- Inform your programme manager,
- Isolation for 2 weeks at the place of residence, until negative results are obtained.

if the health condition worsens, please call 112.

# Vaccination against COVID-19

In Russian or  
in English

YOU WERE VACCINATED AGAINST COVID-19 IN YOUR COUNTRY

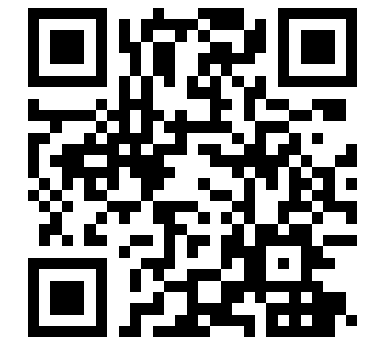
YOU HAD A COVID IN THE LAST SIX MONTHS

HAVE AN OFFICIAL MEDICAL EXEMPTION FROM VACCINATION

YOU ARE UNDER THE AGE OF 18



About vaccination



Register for vaccination



# Measures to Prevent COVID-19 at HSE University



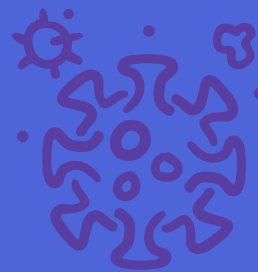
## Medical Masks

Masks are still obligatory on campus. At all university venues, all staff and students must wear masks or respirators that fully cover the mouth and nose.



## Offline Studies

No more than 50 students in one classroom



## Free COVID-19 testing on campus

Free voluntary testing for COVID-19 is available at HSE University. Since medical professionals are invited to HSE University, preliminary appointments are required.





# Free counseling for students in times of stress

Centre for Psychological Counselling

8-800-250-04-33





Medical issues

# IN CASE OF EMERGENCY OR IF YOU FEEL UNWELL



## IF YOU ARE IN THE DORMITORY

Inform your dormitory administrator

## IF YOU ARE OUTSIDE HSE BUILDINGS

Call the General Emergency Line



## The General Emergency Line: 112

FREE of charge:

- First aid
- Urgent hospitalization