



NATIONAL RESEARCH  
UNIVERSITY

SIMO-Student International Mobility Office

# EXCHANGE AT HSE UNIVERSITY: READY, STEADY, **GO!**



Moscow, 2020



---

# EXCHANGE AT HSE UNIVERSITY: READY, STEADY, **GO!**



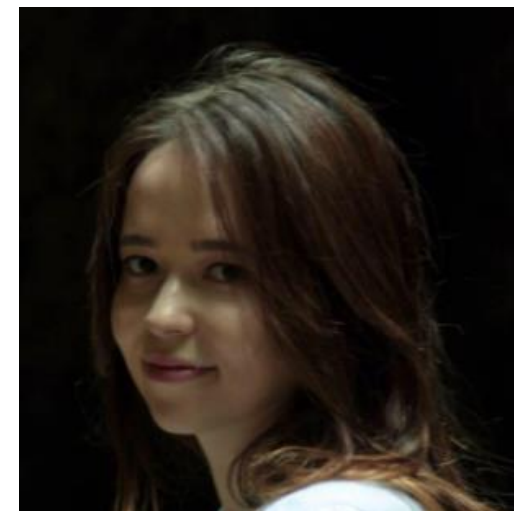
**Tatiana Gremiakina**



**Sofia Esipova**



**Valeria Sokolova**



**Alina Tseboeva**



---


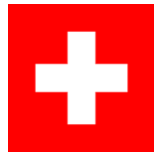
# EXCHANGE AT HSE UNIVERSITY: READY, STEADY, **GO!**

1. Update on visa and travelling situation
2. COVID-19 prevention measures
3. Orientation Sessions
4. Student ID number and HSE e-mail
5. MS Teams
6. Course enrolment in LMS
7. ESN Team



## EXCHANGE AT HSE UNIVERSITY: READY, STEADY, **GO!**

Russian border is open for citizens of the UK, Switzerland, Turkey and Tanzania.

 Russian citizens:	Start <u>face-to-face</u> from 1 September
Citizens of other states:	Start <u>online</u> from 1 September
 Swiss citizens:	Start <u>online</u> from 1 September  Invitation ready at the beginning of September Get your visa, come to Russia and continue studying <u>face-to-face or online</u>



---

## **EXCHANGE AT HSE UNIVERSITY: READY, STEADY, **GO!****

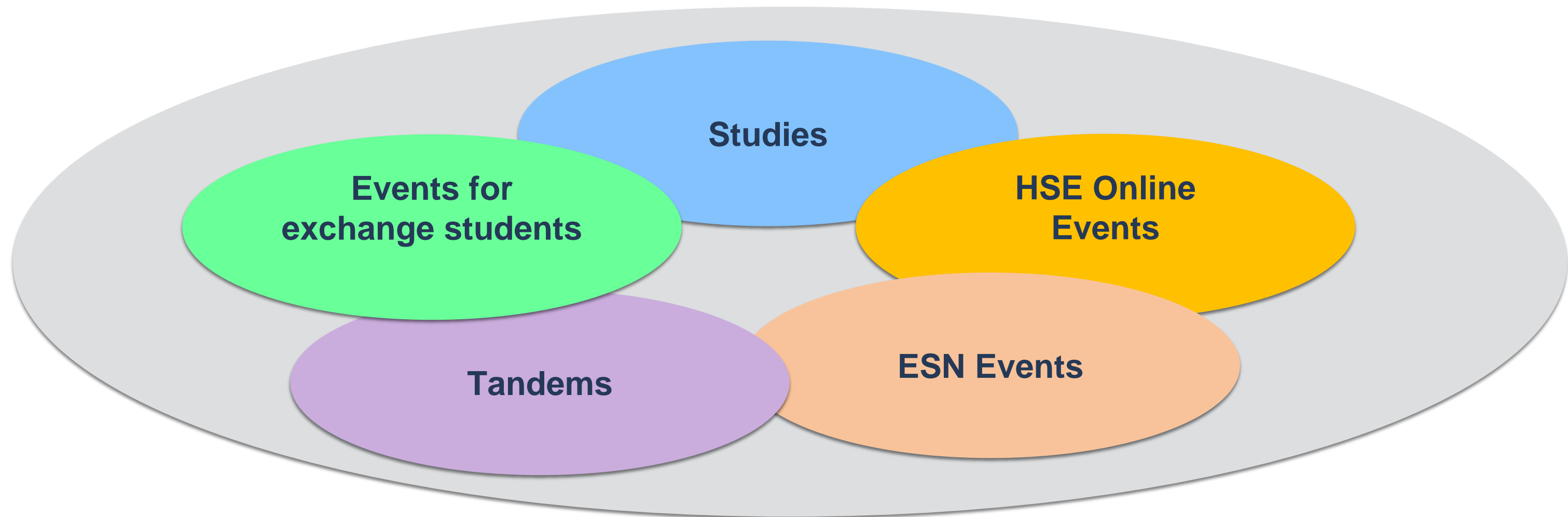
**COVID-19 prevention measures students arriving in Russia:**

- 1. Buy medical insurance – check requirements on [HSE website](#)**
- 2. Take the COVID-19 test not earlier than 3 days before arrival**
- 3. 14-day self-isolation in the dorm, take the COVID-19 test and do a medical check-up on the 10<sup>th</sup>-12<sup>th</sup> day**



# EXCHANGE AT HSE UNIVERSITY: READY, STEADY, **GO!**

## YOUR EXCHANGE SEMESTER AT HSE UNIVERSITY





# EXCHANGE AT HSE UNIVERSITY: READY, STEADY, **GO!**

## Orientation sessions

### **Online**

**1 September 12:00 – 15:00**

**2 September 12:00 – 15:00**

**Moscow Time**

**in Zoom**

### **Face-to-face**

**1 September**

**10:45 – 14:50**

**at 11 Pokrovsky Boulevard**

**[Orientation schedule](#)**


**[Time Converter](#)**





# EXCHANGE AT HSE UNIVERSITY: READY, STEADY, **GO!**


Check your [ASAV Profile](#) for your e-mail address and student ID number:



**LKMSMITHTEST**  
Maria-test Smith-test  
01.01.2000


[Application form](#)  
[Общежитие](#)  
[Documents](#)  
[Send a message to the moderator](#)  
[Information: technical issues](#)  
[HSE Course Guide](#)  
[For International Students](#)  
[HSE Main Page](#)

**Your registration is completed.**

 Thank you.  
Your registration application is successful.

☒ I hereby grant my consent for the collection, recording, systematization, accumulation, modification), extraction and use of the personal data that I have provided. \*

**Personal information**

<b>HSE email</b>	msmithtest@edu.hse.ru
<b>Student ID</b>	01.01/011
Photo *	 successfully uploaded





# EXCHANGE AT HSE UNIVERSITY: READY, STEADY, **GO!**

## Student ID number:

### 1. Password for HSE e-mail and LMS

Edu+Student ID number without dots and slashes

**e.g. Edu2001214567**





---

# EXCHANGE AT HSE UNIVERSITY: READY, STEADY, **GO!**

Student ID number:

2. Library registration and access to library e-resources

3. Hard copy of the Student ID for student discounts in Moscow



# EXCHANGE AT HSE UNIVERSITY: READY, STEADY, **GO!**

HSE e-mail - <http://edumail.hse.ru/>

1. SIMO
2. Instructors and programme managers
3. HSE newsletter





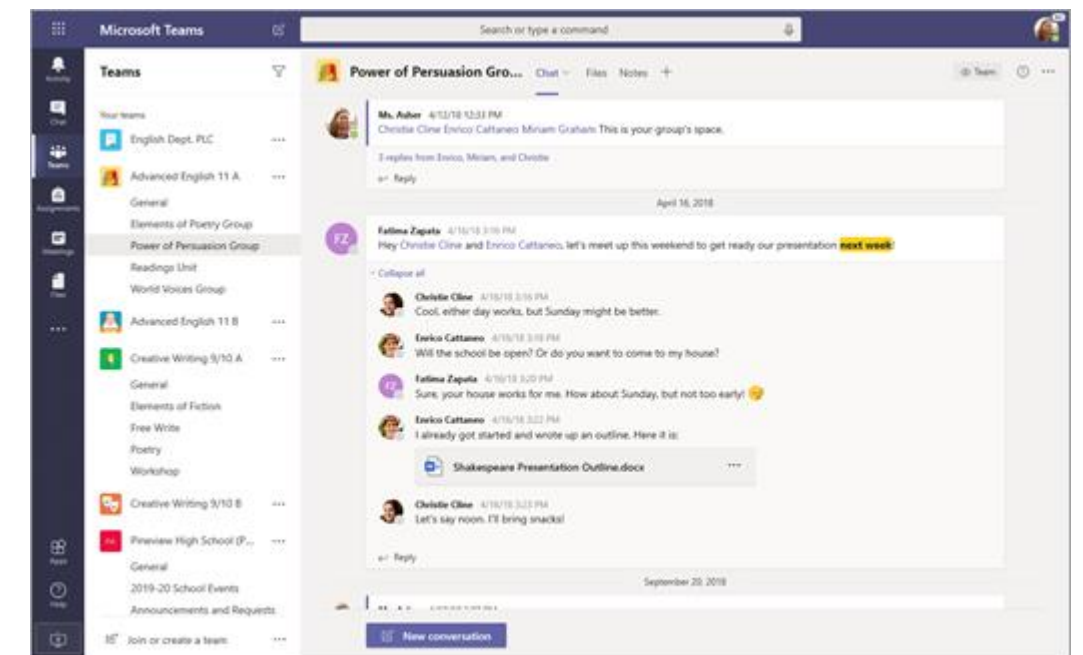
# EXCHANGE AT HSE UNIVERSITY: READY, STEADY, **GO!**

## MS Teams (browser/desktop/app)



Microsoft Teams

1. Log in with your HSE e-mail login info
2. Used for some courses
3. SIMO: Fall 2020 Exchange Group





# EXCHANGE AT HSE UNIVERSITY: READY, STEADY, **GO!**

BEFORE SEMESTER

STEP 1

PRELIMINARY COURSE CHOICE

Date: **by 16 August, 2020**

Must be submitted online: [link](#)

DURING SEMESTER

STEP 2

OPENING OF OFFICIAL COURSE ENROLLMENT FORM IN LMS

Date: **1 September, 2020**

Russian as a Foreign Language:

- Presentation on 2 September during Orientation
- To enroll you will be asked to take a placement test in LMS at the beginning of September.

STEP 3

SIGNING OF YOUR LEARNING AGREEMENT

Date: **after 20 September, 2020** (WHEN COURSE ENROLLMENT IS FINALISED)



---

**EXCHANGE AT HSE UNIVERSITY: READY, STEADY, **GO!****

**ESN Team**  
**will contact you on**  
**25-30 August, 2020**





NATIONAL RESEARCH  
UNIVERSITY

Address: 11 Pokrovsky Boulevard, office 605D

Phone: +7 (495) 772 95 90

<https://istudents.hse.ru/en>